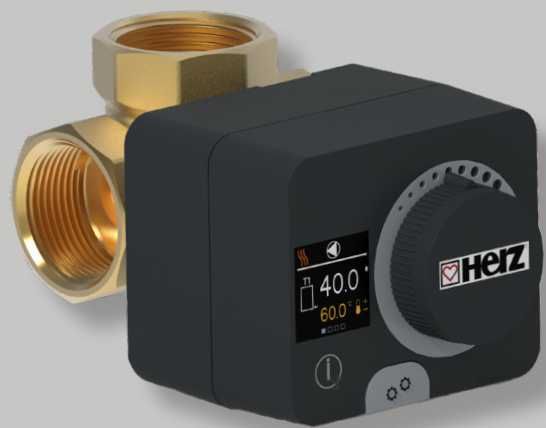
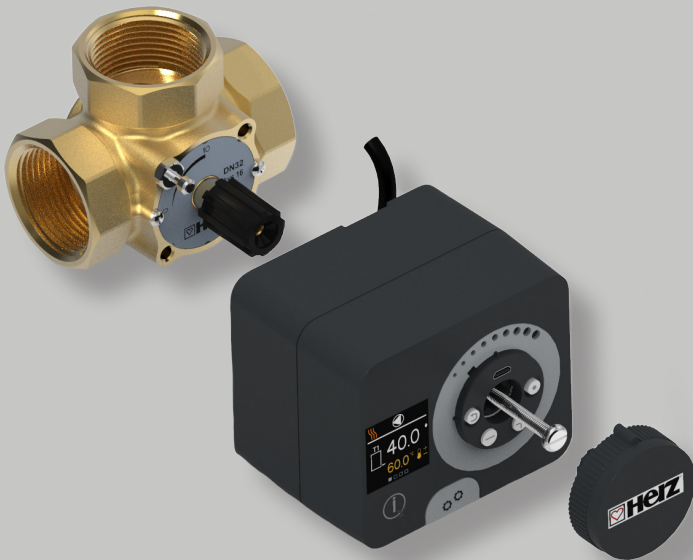
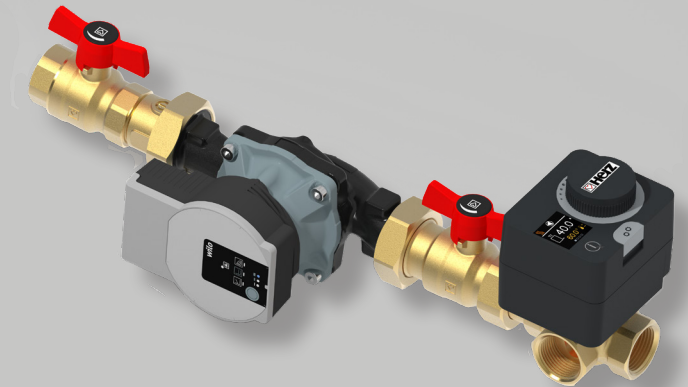


#BEST CHOICE



Smartcontrol motor actuator

Applications

Smartcontrol (1 4522 00)

- Regulating the return water temperature to a boiler or other energy source
- Maintaining a constant inlet temperature for heating or cooling systems

Smartcontrol PLUS (1 4522 01)

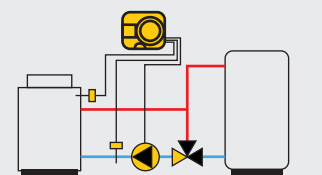
- Weather-controlled regulation of heating and/or cooling
- Control of an independent mixing circuit (mixing valve and circulation pump)
- Control of an additional mixing circuit (mixing valve and circulation pump)



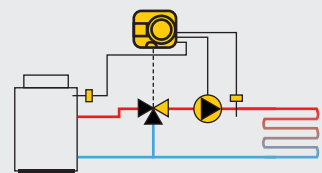
Hydraulic schematics

Smartcontrol (1 4522 00)

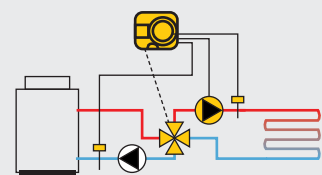
Control of return-pipe temperature



Control of supply temperature

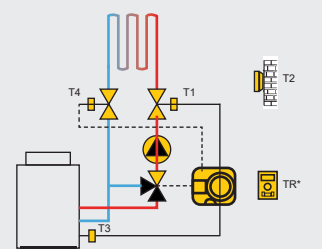


Control of supply temperature and limitation of return-pipe temperature

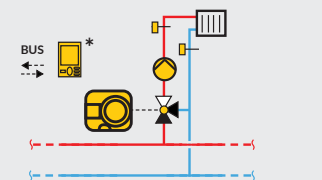


Smartcontrol PLUS (1 4522 01)

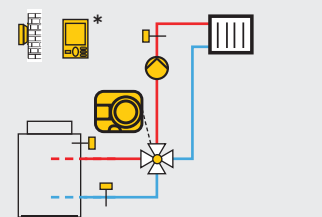
Heating circuit



Additional heating circuit



Heating circuit and return flow regulation



*room control unit not included in set

Outlined functions

- Clutch for manual operation

The manual operation clutch of the motor actuator is activated by pressing a button (marked in the picture). When the clutch is activated, the control of the mixing valve and, if necessary, of the circulating pump is deactivated, thus saving energy.



- Setting keys

The keys for adjusting the regulator are located below the manual scroll button. This prevents unwanted access to the controller settings.



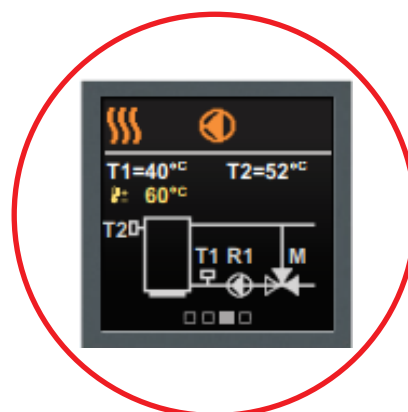
- Plug-in connectors

The compact motor actuator has a socket built into the housing for plugging in the power cord. This allows easy replacement of the cable in case of damage.



- Graphic display

The 240 x 240 pixel colour graphic display provides detailed graphics and text in colour.

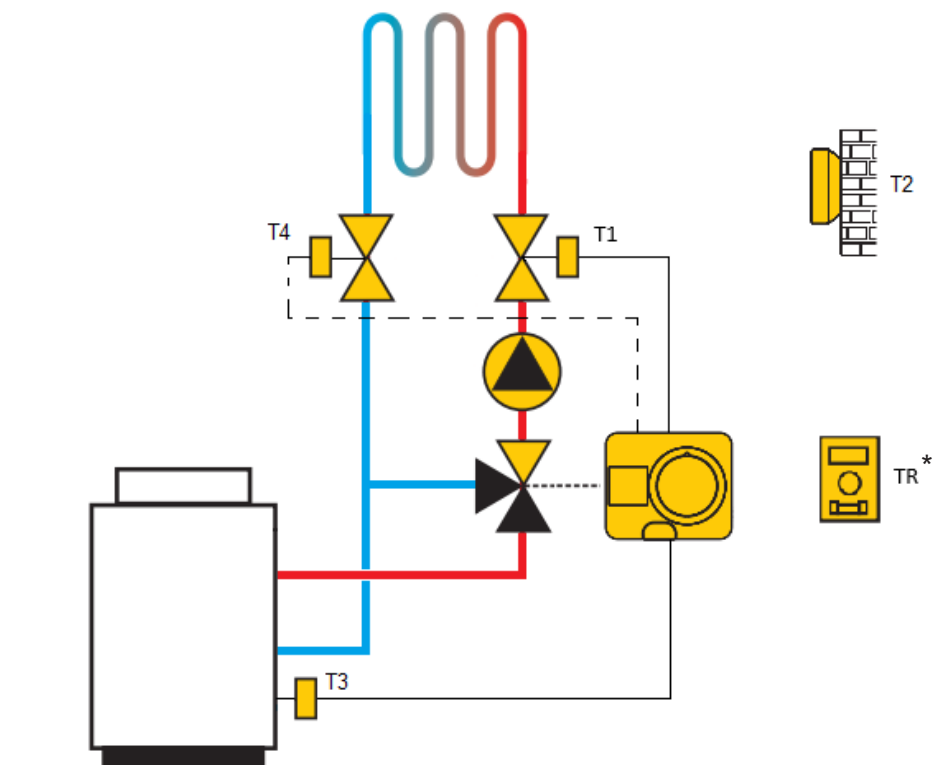
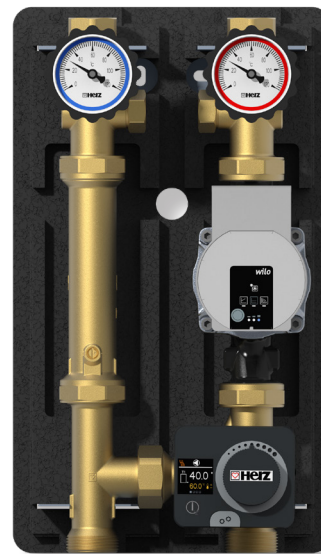


HERZ Pumpfix Smartcontrol Plus

BASIC



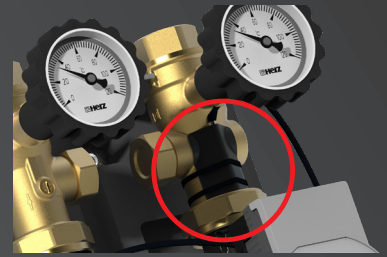
BRASS



- T1 - temperature sensor for hot water circuit
- T2 - outdoor temperature sensor
- T3 - temperature sensor for the heat source
- T4 - temperature sensor for cold water return
- *TR - room control unit (not included in set)

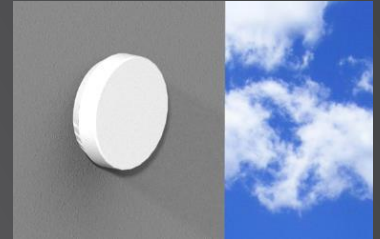
T1 (included in set)

The temperature sensor T1 is located in the ball valve on the hot water system. It measures the temperature of the hot water after the circulation pump. T1 is already assembled in the factory.



T2 - outdoor temperature sensor (included in set)

Outdoor temperature sensor is located on the outside area of the house. It measures the outside temperature.



T3 (included in set)

The temperature sensor T3 is inserted at the location of the heat source and measures the temperature of the heat source. The cable length is 3 meters.

Heat source can be:

- BUFFER
- BOILER



T4 (included in set)

The temperature sensor T4 is installed on the system's cold water return. It measures the return water temperature. If connected, the controller can limit the power of each mixing circuit. This is particularly useful in systems with multiple circuits and an energy source with limited capacity. T4 is already assembled in the factory.

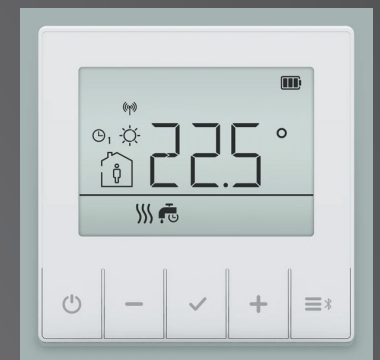


TR - room control unit (not included in set)

The room unit measures the room temperature and actively adjusts the supply water temperature, displays the controller's data and allows the setting of desired temperatures and operating modes. As a result, the supply temperature is always adjusted so that the system provides just enough to achieve the desired room temperature.

The room control unit is not mandatory equipment for the operation of HERZ Pumpfix Smartcontrol Plus and is available as an additional equipment that optimizes the operation.

Weather compensated controller is not included in set. It can be ordered separately (1 4522 34)

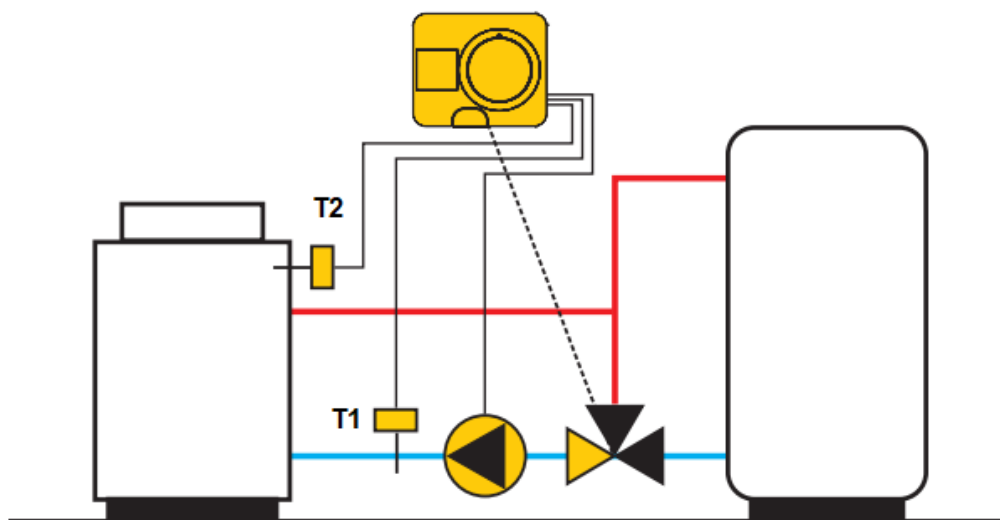
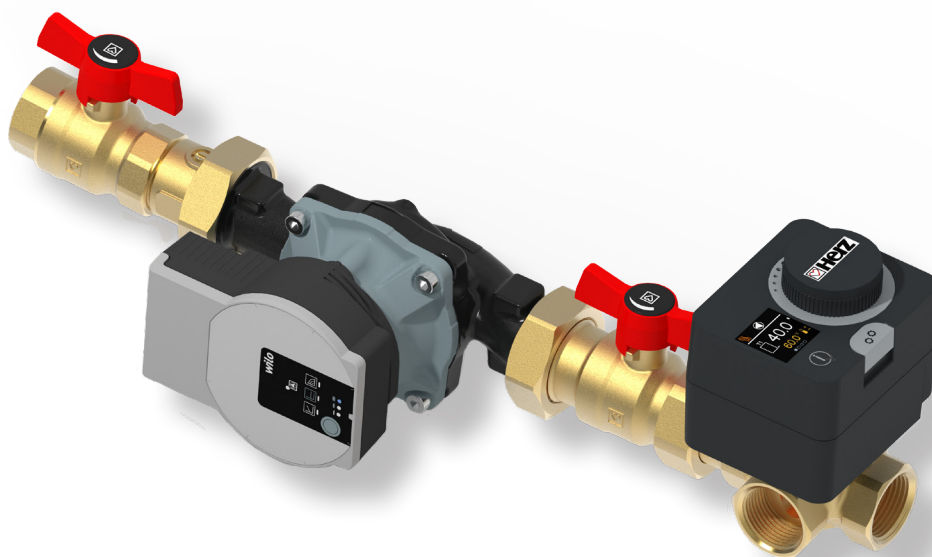


SCHUKO PLUG (included in set)

The HERZ Smartcontrol motorized actuator is equipped with a Schuko connector, making the entire system "Plug & Play." Thanks to the Schuko plug, the actuator can be easily connected to standard European electrical outlets, ensuring a quick and hassle-free installation process. This feature significantly simplifies the setup, as no complex wiring or additional components are required.



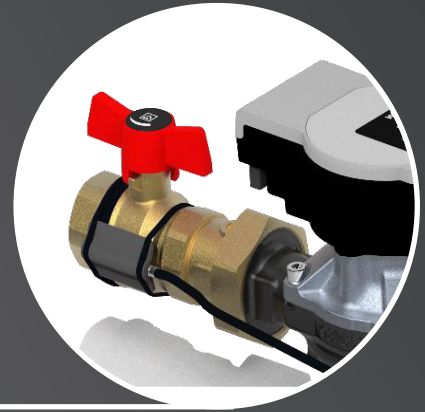
HERZ Euromix Smartcontrol



T1 – temperature sensor for cold water return
T2 – temperature sensor for the heat source

T1 (included in set)

The temperature sensor T1 is installed on the return line, behind the circulation pump. It measures the temperature of the cold water before entering the boiler. The cable length is 1 m.



T2 (included in set)

The temperature sensor T2 needs to be inserted at the location of the heat source and measures the temperature of the heat source. The cable length is 3 meters

Heat source can be:

- BUFFER
 - BOILER
-



SCHUKO PLUG (included in set)

The HERZ Smartcontrol motorized actuator is equipped with a Schuko connector, making the entire system "Plug & Play." Thanks to the Schuko plug, the actuator can be easily connected to standard European electrical outlets, ensuring a quick and hassle-free installation process. This feature significantly simplifies the setup, as no complex wiring or additional components are required.



WARM ADVICE FROM THE HEART

Would you like to discuss the design of your installation?

Or are you wondering how to close a particular thread or how to choose a setting for a particular valve?

Looking for information? Need advice?

Take advantage of our experience.

We'll listen to you - tailor our support to your needs.

We'll explain how our products work in practice.

We'll help you clarify your technical doubts.

Call us.



HERZ d.o.o.

Grmaška cesta 3, 1275 Šmartno pri Litiji

Slovenia

T: +386 1 896 21 02

F: +386 1 896 21 40

E: info@herz.si

www.herz.si

MADE IN EU