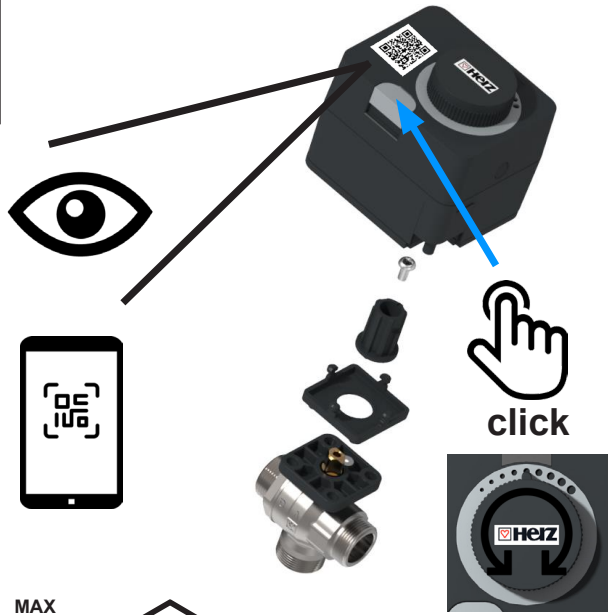
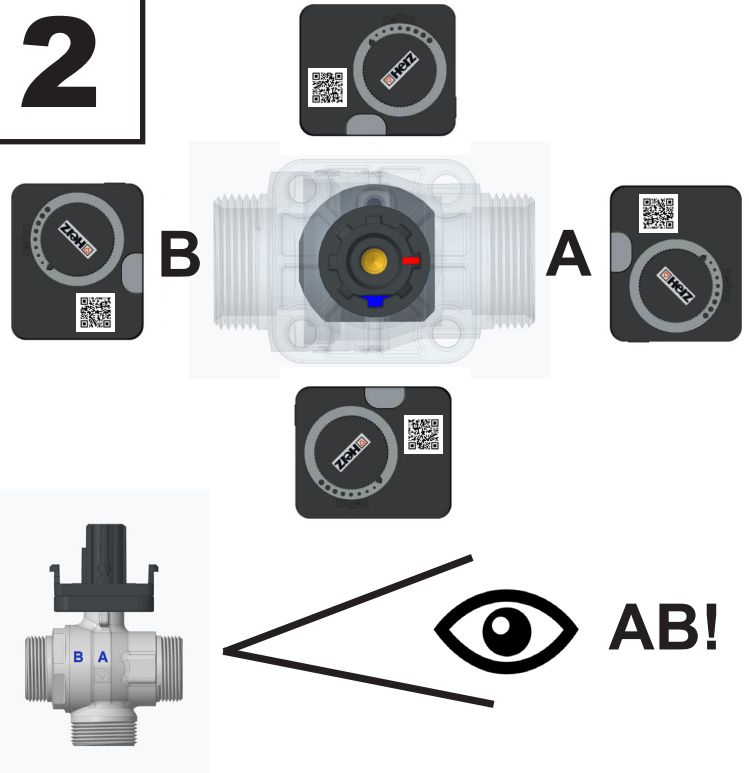




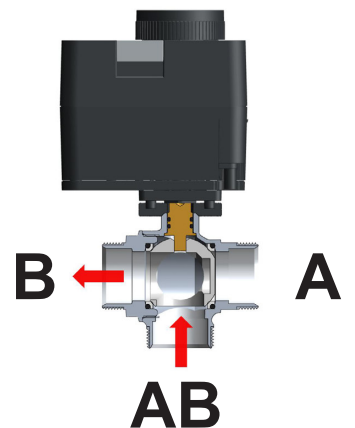
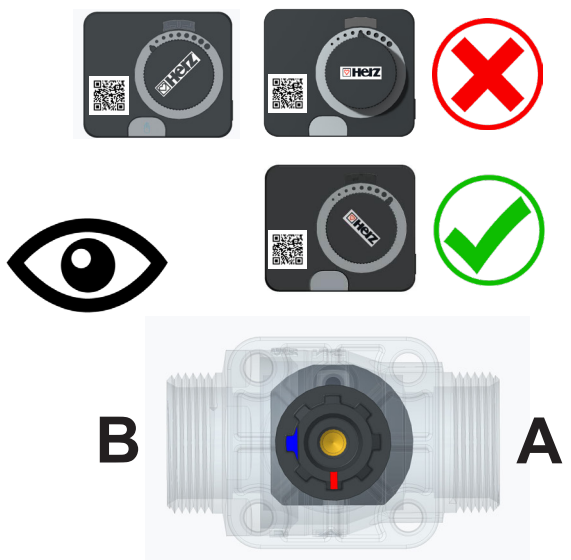
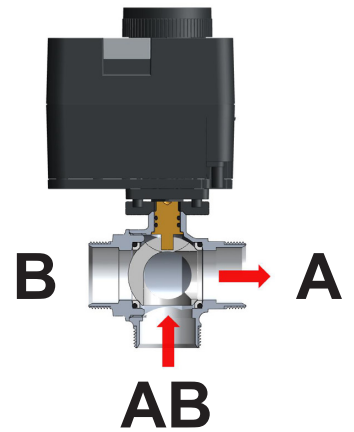
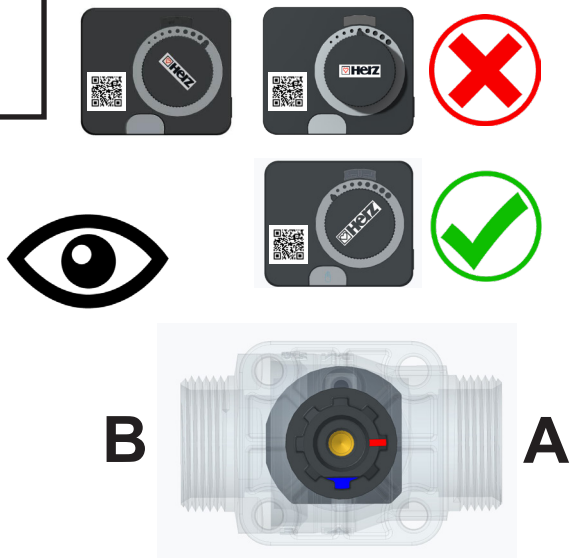
1



2

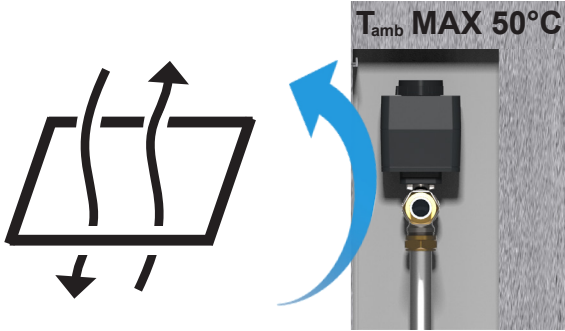


3



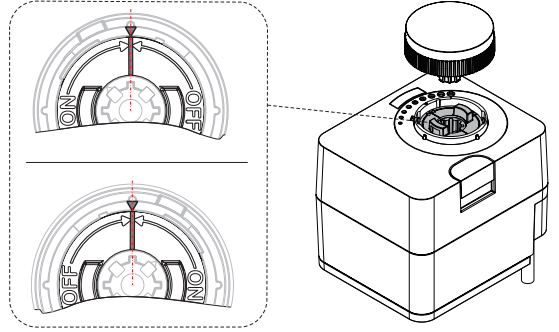


4



5

1 7711 61 (230 V)
1 7711 63 (24V AC/DC)



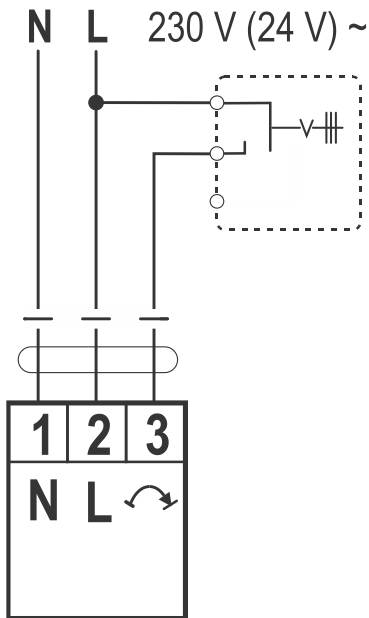
	N	L	L	AUX ¹	
	1	2	3	4	5
3-point	N	↔	↔	L1 L1'	
2-point	N	↔	L	L1 L1'	
2-point	N	L	↔	L1 L1'	



6

1 7711 60 (230V)
1 7711 62 (24V AC/DC)

2-point

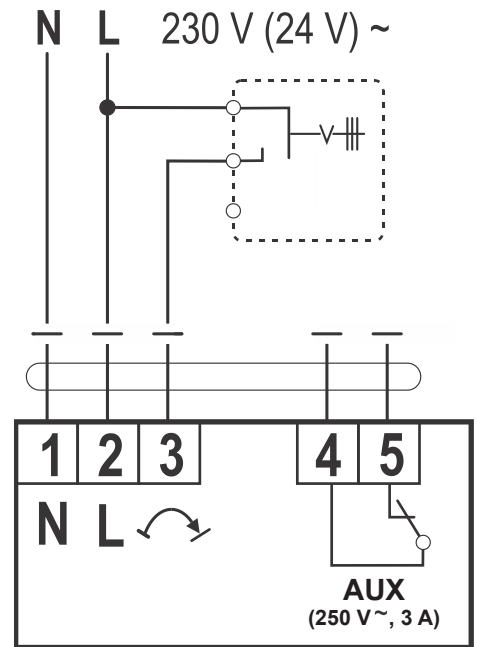


	1	2	3
	N	↔	L
	N	↔	L



1 7711 61 (230 V)
1 7711 63 (24V AC/DC)

2-point + AUX Switch (250 V~, 3 A)



	1	2	3	AUX	4	5
	N	↔	L	↑	↓	
	N	↔	L	↑	↓	