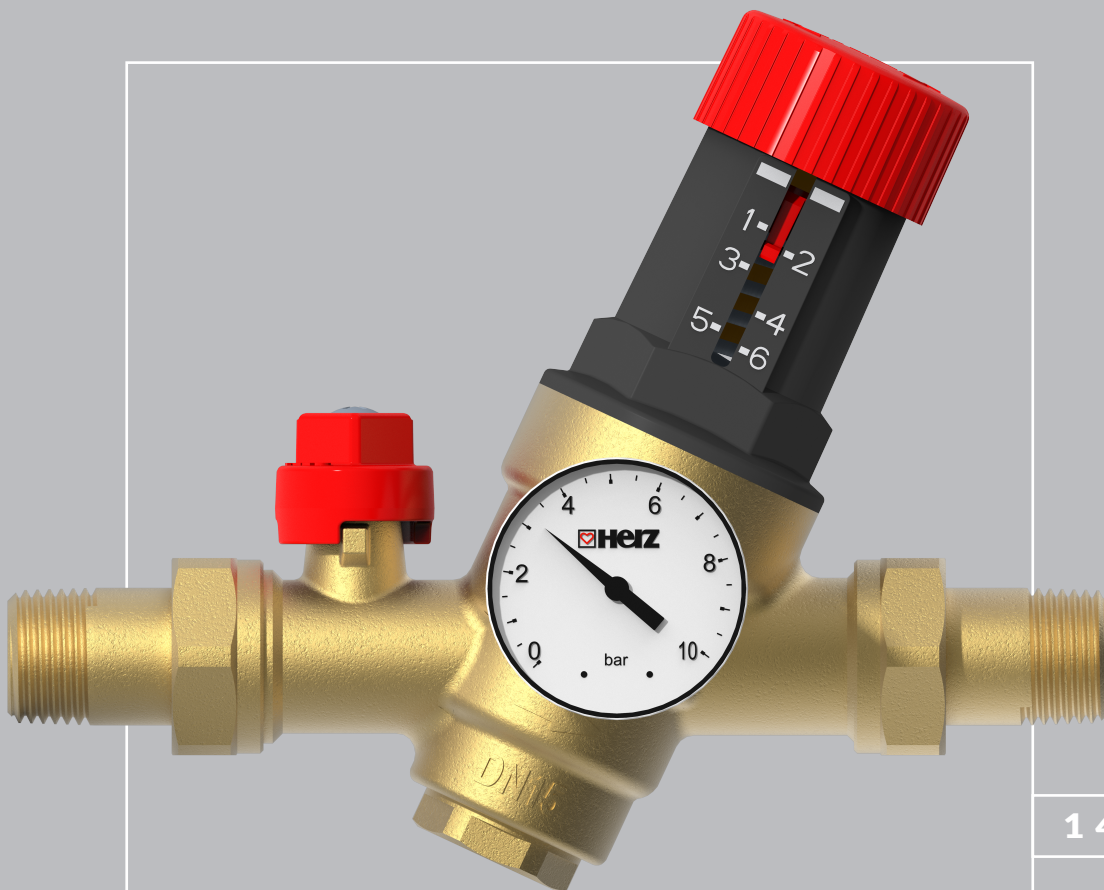
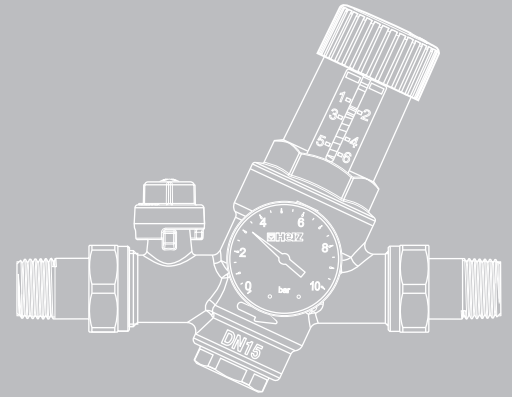


# #BEST CHOICE



1 4216 01

AUTOMATIC FILLING VALVE



## Ensure your heating system runs smoothly with our Automatic Filling Valve!

### Stable Pressure:

Maintains system pressure automatically by adding water when needed.

### Easy Setup:

Adjust the pressure easily before installation using the red knob (preset to 1.5 bar, adjustable from 1.5 to 6 bar).

### Automatic Stop:

Water supply halts once the desired pressure is reached.

### Safety Features:

Integrated ball valve for easy shut-off and a check valve to keep heating water separate from potable water.

### Pressure Monitoring:

Built-in indicator for quick and accurate system checks.

### Filtering:

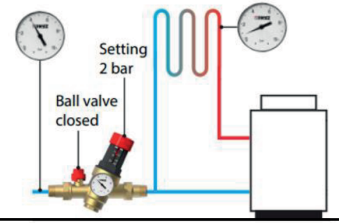
Incorporates an integrated filter within a flat gasket seal

### Operating data

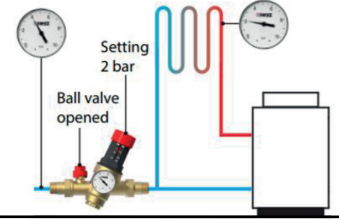
Manometer scale:	0-10 bar
Mesh perforatio:	0.3 mm
Medium:	water
Maximum inlet pressure:	16 bar
Outlet pressure range:	1.5-6 bar
Factory setting:	1.5
Medium temperature range:	0.5-70°C
Pressure gauge connectors:	1/4" F (ISO 228-1)
Connectors:	external thread acc. to ISO 7-1

## Function principle

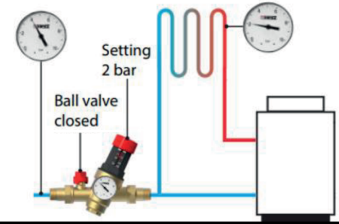
Pressure in heating system is low (0,8 bar)



Open the ball valve. Pressure in heating system rises to set value (2 bar)

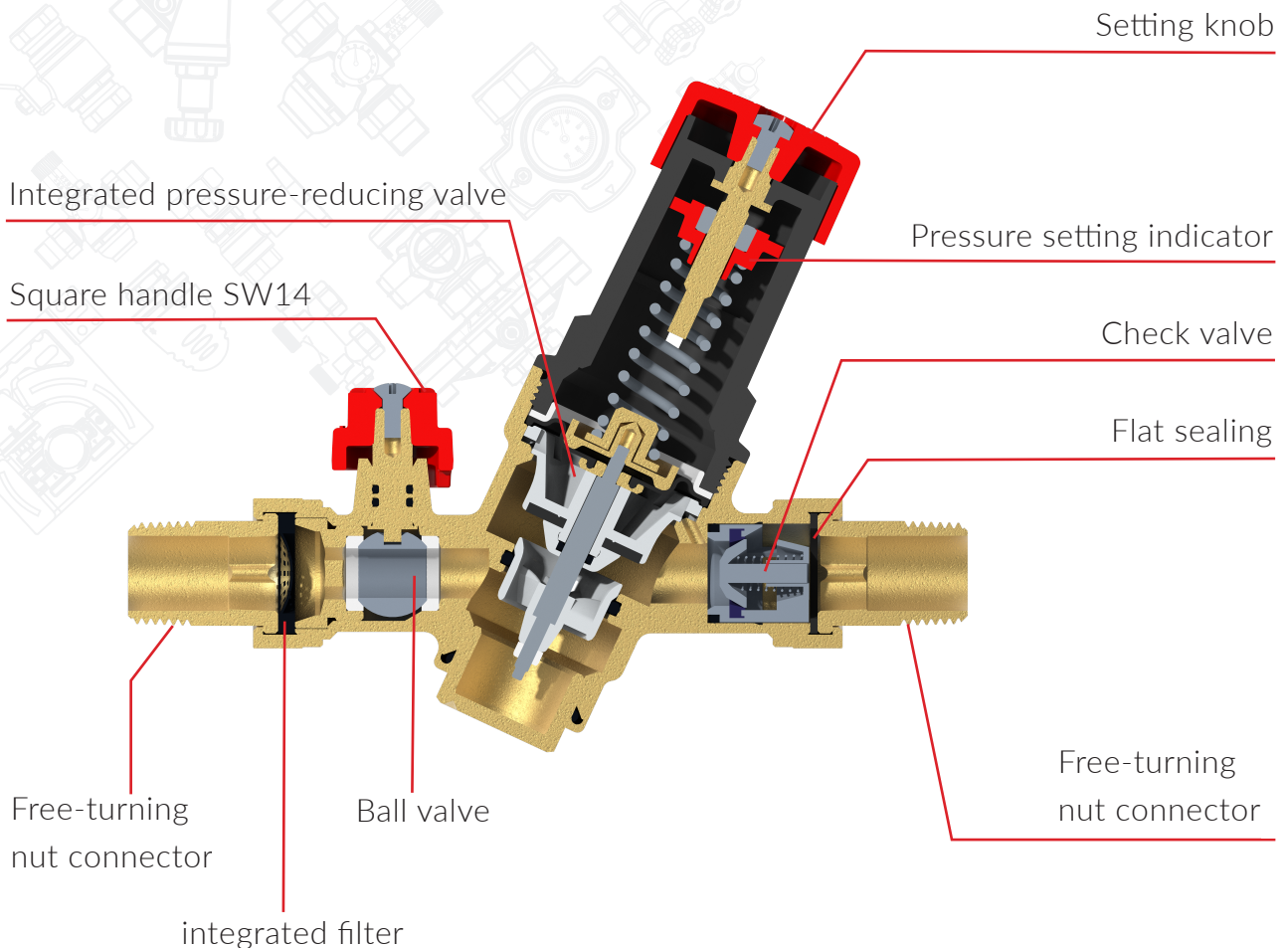


After filling the heating circuit to 2 bar, close the ball valve to isolate it from the drinking water system, preventing any continuous exposure to the pressure of the potable water supply.



**Note:** Avoid exceeding the pressure scale to prevent damage.  
Adjust and test for optimal performance!

## Components of Automatic filling valve



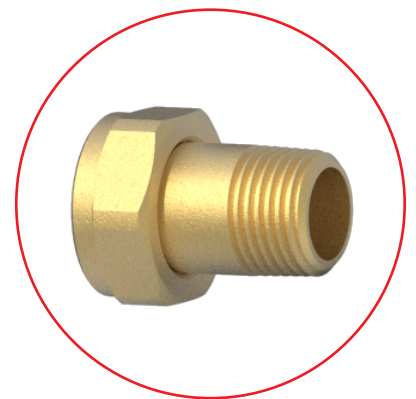
## Pressure gauge

The HERZ automatic filling valve features a pressure gauge with a 0-10 bar scale, allowing precise monitoring of the pressure within the heating system. The gauge can be installed on either side of the valve housing due to the two available 1/4" connectors, providing flexibility in installation.



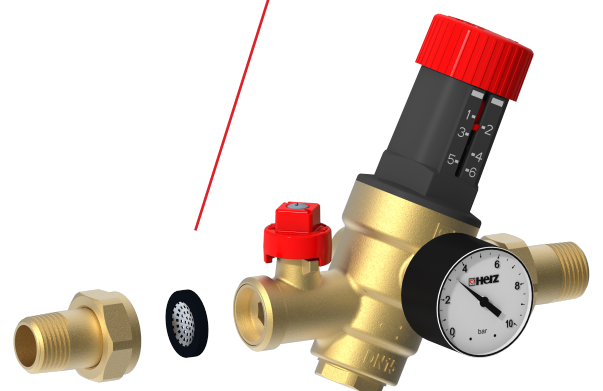
## Free turning nut

HERZ Automatic filling valve is designed to be connected to the system with a free-turning nut (which are supplied in the set). This allows easy service and the possibility of disconnecting the valve during the maintenance process.

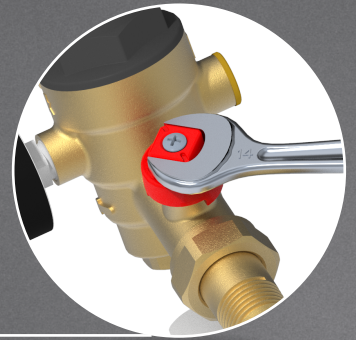


## Filter

The HERZ Automatic filling valve incorporates an integrated filter within a flat gasket seal, designed to provide dual functionality. For correct installation, the filter must be positioned on the upstream side, before the valve, at the starting point of the arrow marked on the valve body.



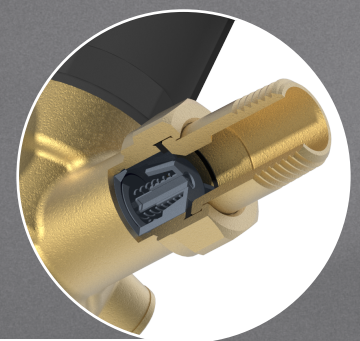
Ball valve features an integrated handle that requires a 14mm spanner for operation, ensuring that unauthorized personnel cannot easily manipulate the valve. This design provides security by restricting access to those with the proper tools, preventing accidental or unwanted adjustments.



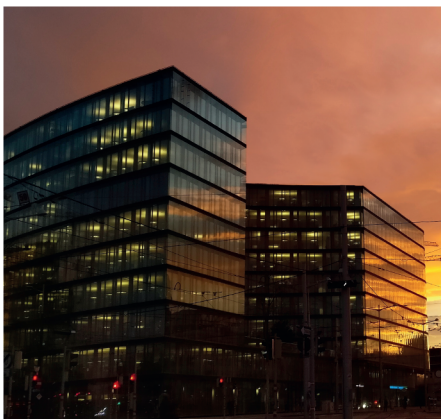
Pressure setting: to set the pressure on the automatic filling valve, use the red adjustment knob located on top of the product. The knob allows for easy manual adjustment of the pressure in the heating circuit. To increase the pressure, turn the knob clockwise; to decrease the pressure, rotate it counterclockwise. The knob is designed for comfortable hand operation, enabling quick and straightforward adjustments without the need for additional tools.



The built-in check valve ensures that water from the heating system remains separate from the potable water supply, preserving water quality and safety.



Our products are of the highest quality, tested by tens of thousands of professional installers worldwide. This is further confirmed and validated by numerous implementations in various construction sectors.



Herz d. o.o.  
Grmaška cesta 3, 1275 Šmartno pri Litiji  
tel.: +386 1 896 21 02, e-mail: info@herz.si

[www.herz.si](http://www.herz.si)

MADE IN EU